

Issued by:
**Commerce and Tourism Section
Maniwa City Office**
Kuse 2928, Maniwa City,
Okayama Prefecture 719-3292
TEL: 0867-42-1033
FAX: 0867-42-1037
URL: <http://www.city.maniwa.lg.jp/>



One of Western Japan's Foremost Hot Spring Towns HOT SPRINGS

Yubara Hot Spring Village

The numerous hot springs located in the Yubara region (Yubara Hot Spring, Shimoyubara Hot Spring, Taru Hot Spring, Maga Hot Spring, and Gouroku Hot Spring) are collectively known as the Yubara Hot Spring Village. Yubara Hot Spring offers an outdoor spa (sunayu) where visitors can soak up the steam rising from the riverbed as they take in a view of the majestic Yubara Dam. Come anytime to relax and refresh yourself: this spa is open 24 hours a day, and it's free of charge! The Yubara area is full of ryokan (traditional Japanese inns) as well as gift shops, and the clack-clack of Japanese wooden clogs *geta* can be heard everywhere as you take in the traditional Japanese atmosphere of the place. At Shimoyubara, there are separate outdoor spas for men and women, plus an outdoor bath for cats and dogs—a rarity in any part of Japan. The historic Taru and Maga Hot Springs are home to long-term guests who come for healing purposes. At the Gouroku Hot Spring and its adjoining accommodation, first opened during the early Edo Period, visitors are treated to the wonderful quiet of the mountains.



Outdoor spa (sunayu)

• Accommodation

Yubara Hot Spring (18)

Taru Hot Spring (4)

Maga Hot Spring (2)

Gouroku Hot Spring (1)



Yubara Hot Spring



Shimoyubara Hot Spring



Taru Hot Spring



Maga Hot Spring



Gouroku Hot Spring

History comes alive in Katsuyama. Come see us, and travel back in time! HISTORY

Katsuyama Historical Town Preservation Zone

Home to many old samurai and merchant houses complete with white walls and Namako walls (lattice type), the nostalgic atmosphere of this area gives the visitor a true sense of the history and culture of the ancient castle towns. The quiet streets come to life with the Doll Festival in spring, and with the dynamic Kenka Matsuri ("Fighting Festival") in the fall. The houses in the historic preservation zone are decorated with colorful noren—a friendly welcome to visitors.



Former Senkyo Jinjo Elementary School

This Renaissance-style schoolhouse built in 1907 features a perfectly symmetrical design. The lecture hall in the center of the second floor has a double-folding Western-style ceiling, while the paneling is done entirely in thin Hinoki wood. The windows are decorated with hand-blown glass made 100 years ago.



Bitchu Kanachiana

This limestone cave is the oldest mentioned in Japanese ancient writings. According to the writings, it was originally 800 meters in length. (Approximately 300 meters of it is now is now open to tourists). The princess fireflies can be viewed inside the cave from mid June through late July every year.



Get away from it all at the incredible Hiruzen Sanza mountains! NATURE

The Hiruzen Plateau

Located to the south of the Daisen-Oki National Park, the huge, magnificent Hiruzen Plateau is a popular tourist destination. Dairy farming is prevalent in the region, and the number of jersey cows grazed here is among the highest in Japan. Visitors are treated to scenic views of pastures as well as delicious milk products. In the spring, tourists can enjoy cycling and walking on the newly-green Hiruzen Plateau. When summer comes, people escape the summer heat to camp and ride horses, while in the fall climbers can take on the Hiruzen Sanza mountains. And when the weather turns cold, it's time for your favorite winter sports at our three different ski resorts. Hiruzen is truly a destination for all seasons!



Kanba Waterfall

The Kanba Waterfall has been named one of Japan's top 100 waterfalls. With a height of 110 meters and a width of 20 meters, the fall cascading down sheer rock is one of Japan's most magnificent sights. Some 200 wild monkeys live in the area, making this spot even more fun.



Okayama Prefecture Maniwa City

Maniwa City is full of terrific sightseeing spots including high plateaus surrounded by magnificent nature—the perfect place to relax and enjoy yourself. But that's not all Maniwa has—we've also got hot springs where you can sit and watch the steam melt your stress away, nostalgic historic streets, and much more.

Access to Maniwa City

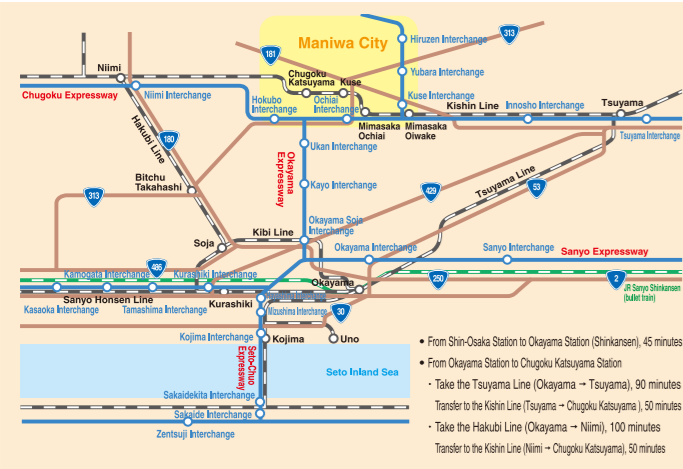
Travel Time to Okayama Prefecture by Air

- Regular International Flights:
 - From Seoul: 1 hour, 35 minutes via Incheon International Airport
 - From Shanghai: 2 hours, 10 minutes via Shanghai Pudong International Airport
 - From Dalian: 2 hours via Dalian Zhoushuizi International Airport
 - From Beijing: 4 hours via Beijing Capital International Airport
 - From Guam: 3 hours, 40 minutes via Guam International Airport
 - From Taipei: 3 hours, 10 minutes via Taiwan Taoyuan International Airport (to Kansai International Airport)
- Regular Domestic Flights:
 - From Tokyo: 1 hour, 10 minutes via Haneda Airport
 - From Sapporo: 1 hour, 45 minutes via New Chitose Airport
 - From Kagoshima: 1 hour, 15 minutes via Kagoshima Airport
 - From Okinawa: 1 hour, 45 minutes via Okinawa Airport



• 60 minutes from Okayama Airport by car (rental cars available)
[Okayama Airport → Okayama Expressway: Kyo Interchange → Yonagodo Road: Kuse Interchange]

Travel Time to Maniwa by Train



Time Travel to Maniwa City by Road

- From Osaka: 150 minutes
[Chugoku Expressway → Ochiai JCT: Yonago Expressway → Kuse Interchange → National Route 181 (West)]
- From Hiroshima: 160 minutes
[Chugoku Expressway → Ochiai JCT: Yonago Expressway → Kuse Interchange → National Route 181 (West)]
- From Okayama or Kurashiki: 80 minutes
[Sanyo Expressway → Okayama JCT: Okayama Expressway → Hokubu JCT: Chugoku Expressway → Ochiai JCT: Yonago Expressway → Kuse Interchange → National Route 181 (West)]

Scenic Spots in the Vicinity

Peripheral showplace

[A World Heritage Site]

Himeji Castle (Hyogo Prefecture)

With its whitewash walls and elegant structure, this castle is likened to a dancing egret, hence its other name "Shirasagi (egret) Castle."

[World Heritage Site]

Iwami Ginzan Silver Mines (Shimane Prefecture)

These mines were Japan's first Industrial Heritage Site. The Iwami Mines, the largest in the country at the time, were active from the late Warring States Period through the early Edo Period. The mines were such an integral part of Japan's trade with other countries that the name "Iwami" was even known in Europe during the colonial period.

The Seto-Ohashi Bridge (Kurashiki City)

This massive bridge is among the largest in the world that combines both road and railway. The panoramic view of the Washu-zan mountain at the southernmost tip of the Kojima Peninsula is one of the best of the Seto Inland Sea area. Meanwhile, the view of the spectacular Seto-Ohashi Bridge from the Washu-zan mountain and the many islands dotting the Seto Inland Sea is simply breathtaking.



[A World Heritage Site]

Itsukushima Shrine (Hiroshima Prefecture)

Along with Matsushima of Miyagi Prefecture and Amanohashidate of Kyoto Prefecture, Miyajima Island, which sits on the Seto Inland Sea, is considered one of the three most beautiful views in Japan. The festive wooden structures of Itsukushima Shrine sit on the coastline to welcome the visitor. This series of buildings is an invaluable example of Heian Period culture.

Okayama Korakuen Garden (Okayama City)

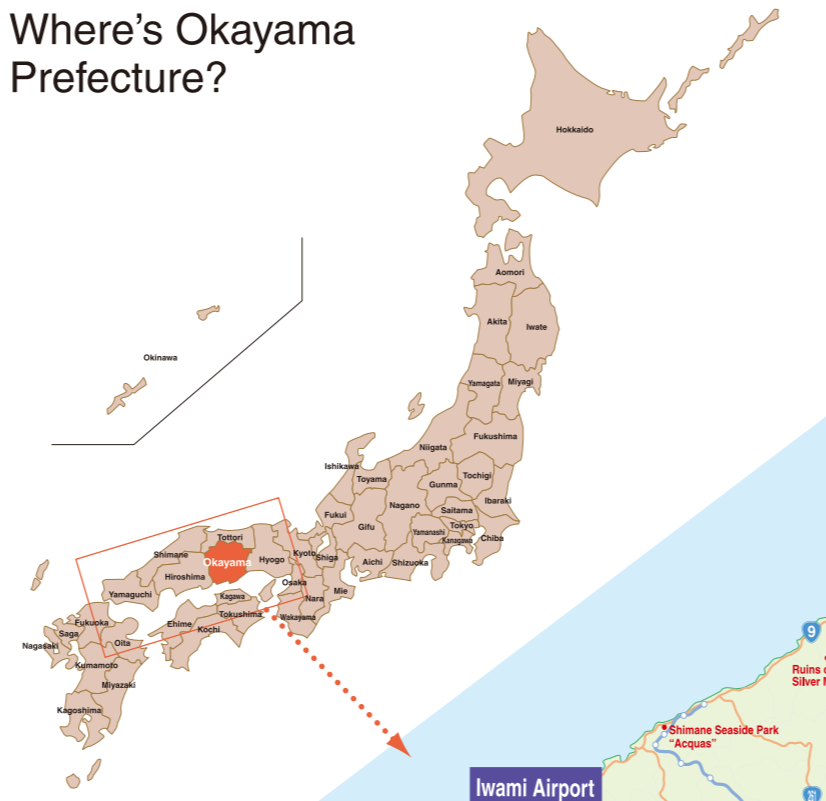
Completed in 1700, the Korakuen Garden maintains roughly the same format as it did when it was first created. This type of daimyo or traditional Japanese garden, a rarity in Japan's countryside, has been named one of the country's top three daimyo gardens. The Michelin Guide gives it three stars.



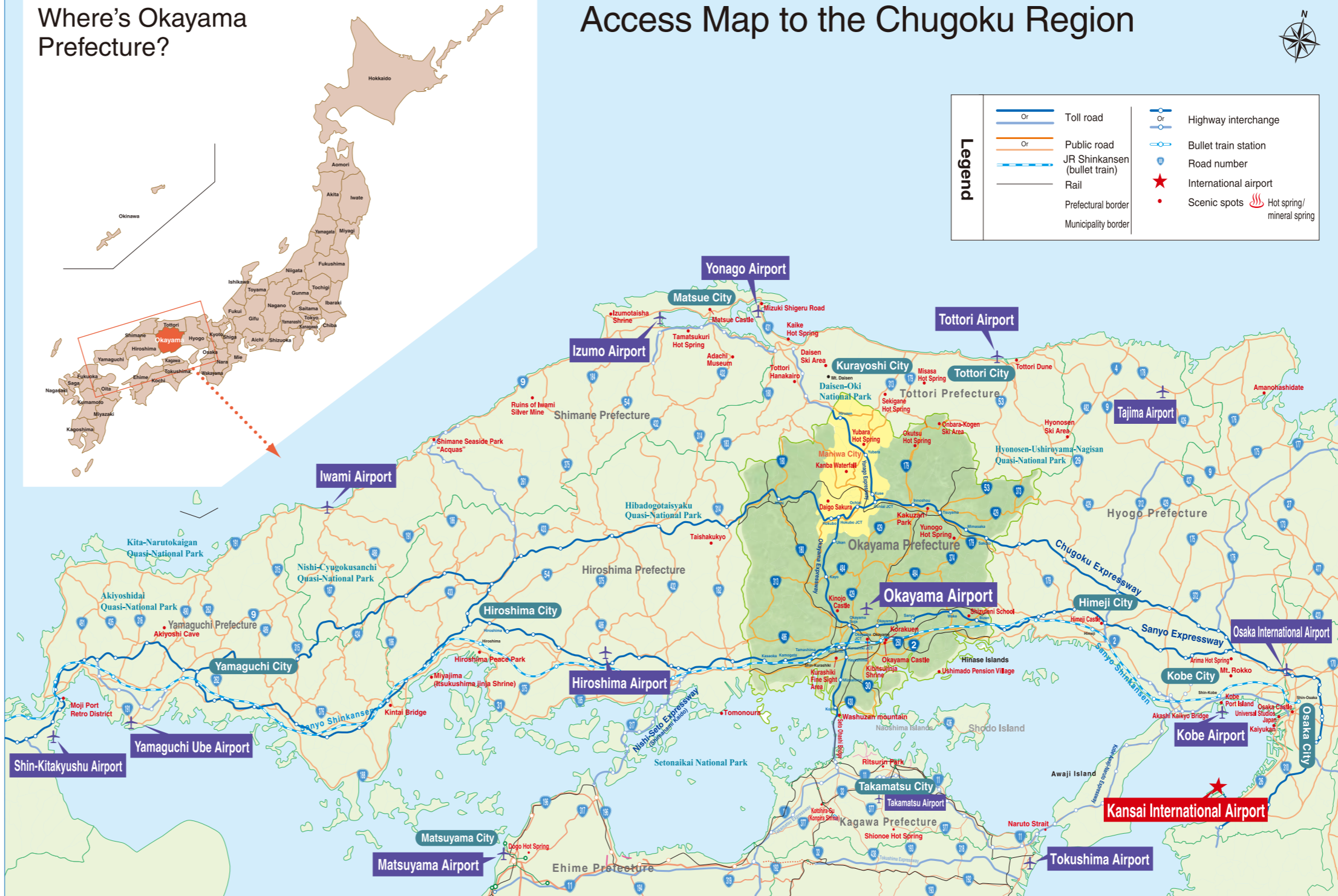
Adachi Museum of Art (Shimane Prefecture)

This unique museum boasts both traditional Japanese gardens and modern Japanese paintings all in one place. The museum offers an array of fascinating art pieces including modern Japanese paintings by the likes of Taikan Yokoyama, as well as ceramic ware, sculpture, and more. Against a backdrop of spectacular views of nature, the Japanese Garden sits on some 165,000sqm of land. The garden has something for every season, so come see it any time of the year!

Where's Okayama Prefecture?



Access Map to the Chugoku Region



Maniwa City Yearly Event Calendar

February	First Sunday	Hokubo-Buri Market (Hokubo area)
March	Early in the month	Katsuyama Doll Festival (Katsuyama area)
March	Late in the month	Hina-no-bunka Festival (Doll Festival, Hokubo area)
June	June 26	Rotenburo ("Outdoor spa bath") Day (Yubara Hot Spring)
August	In the mid-month	Omiya Odori Dance (Hiruzen area)
October	October 19 & 20	Katsuyama Kenka Danjiri (Float & Fighting) Festival (Katsumata area)
	October 25 & 26	Kuse Danjirigenka (Float & Fighting) Festival (Kuse area)

Maniwa City's Golf Courses



Sun Forest Golf Club

The course is a total of 6,461 yards in length (par 72) with a land area of 137 ha. Each hole of this course stretches over a luxurious 30-plus meters of natural forest.

●Land: 137 ha
●Course: 18 holes, par 72 (6,461) yard, bent one green
JGA course rating: 70.2

Bicchu Kogen Hokubo Country Club

This course boasts undulating hills dotted with the strange and beautiful rock formations typical of karst tableland. Its many strategic features make it a popular choice.

●Course description: 18 holes, par 72
3,549 yards out, 3504 yards in
Bent green
Course rating: 72.8

Maniwa Country Club

Blessed with a mild climate and surrounded by the lush Chugoku Range, Maniwa Country Club offers a total of 27 holes on three courses (Hinoki, Ume, and Keyaki).

●Course description: Standing at 450 meters above sea level, this high-plateau course is flat throughout. Three courses of Hinoki, Ume and Keyaki, with 27 holes

Takagawa Shinyubara Country Club

Surrounded by 1,000-meter tall mountains, this 18-hole course is blessed with cool breezes for an incredibly comfortable game. The dynamic layout of the course takes full advantage of the area's topography. In an added bonus, players can take in beautiful views every season of the year.

●Course description: 18 holes, Par 72 (6,093/regular) bent green

Landmark Golf Club

This flat fairway enables players to see each hole—as well as the pin flag from the teeing ground—very clearly. The green is a "bent green," which means that the strategic aspects of the course and the targets are easy to identify.

●Course description: 18 holes, Par 72 6,867 yards
Known for its high level of difficulty, this course is optimal for players who truly enjoy the game of golf as a sport, and the targets are easy to identify.

*The information shown here is current as of March 2009. Note that it is subject to change without notice. Please be sure to confirm the information.

Maniwa City's Ski Resorts



Kamihiruzen Ski Resort

This slope, which is one of the Hiruzen Sanza mountains, broadens at the end for a leisurely finish.

Located near the city interchange for easy access.

Hiruzen Bear Valley Ski Resort

Just five minutes from the Hiruzen Interchange, access to this resort is extremely convenient. An urban-style resort, it's also a terrific sport for night skiing.

Ski, ski, ski to your heart's content in this magnificent natural setting,

Tsuguro Kogen Ski Resort

Featuring a majestic view of the Daisen and Hiruzen Sanza mountains, the slopes are extremely close to Okayama City. With a maximum angle of 30 degrees (splash) and an average of 18 degrees, these gentle slopes are suitable to skiers of various levels.

and come away feeling refreshed. You'll love the excitement of it all!

Maniwa City's Local Specialties



Hiruzen Wine Products

Try a variety of delicious local food items including wines as well as juices and jams made from luscious wild mountain grapes found only in a certain part of the Hiruzen region.



Jersey cow milk products

Sample the local milk products such as yogurt and cheese made from jersey cow milk, which has a high fat content that gives it a unique bold flavor. These rich-tasting products are the real thing!



Soba noodles

Hiruzen and Yuhara are famous as soba noodle production sites. The area's noodles are made the old-fashioned way: by kneading the buckwheat on mills. A trip to the area is not complete unless you try these delicious noodles!



Local Sake

Maniwa has high-quality rice and clean-flowing rivers—the perfect ingredients for sake. The city is home to three sake breweries where the sake is brewed according to strict traditional methods.

Maniwa's Craft Traditional Arts

These crafts are authentic traditional items—both in terms of materials and in the techniques used to make them. They make terrific gifts!



Katsuyama Bamboo Crafts

These crafts showcase the inherent beauty of bamboo, including the sweet scent of long-jointed bamboo or patterns of thin-strip bamboo. Made using time-tested techniques, they retain their unique original dynamism. These items bring beauty and function together: featuring attractive top-quality long-jointed bamboo, they are also highly convenient for use in everyday life. This is the secret to their great appeal.



Kashinishi Washi Japanese Paper

The Oriental paperbush, which is material used to make washi, has been cultivated in the Kuse region since ancient times. Besides maintaining its shape and color, it is also highly insect-resistant. Strained in pure water, this washi is attractive as both a material and as the finished product. It is well-liked for use in writing pad, address books, and so on.

Maniwa craftsmen produce various crafts using traditional techniques and adapting them to modern lifestyles.



Gobara Lacquerware

This gorgeous-yet-durable lacquerware is a 600-year tradition. Utilizing chestnut wood from the Hiruzen region plus natural lacquer, it features a rustic finish.



Reed Crafts

Featuring wild reeds from the marshlands of Hiruzen region, these crafts are water-repellant, shutting out rain and snow. Items include snowshoes, hand-held baskets, and baskets for carrying on the back.



Takada Ink Stones

These special ink stones have been produced here for some 500 years, and Takada is one of the three largest manufacturers of ink stones in Japan. Hand-crafted into natural shapes using traditional processes, they still feature long chisel.

The magic of Maniwa

Seasonal Traditions

Visitors to Maniwa City can enjoy the changing seasons throughout the year. We've been featured in many all-Japan "Best 100 Sightseeing Spots." So come and relax in this majestic natural environment.

The Daigo Sakura (cherry blossom tree)

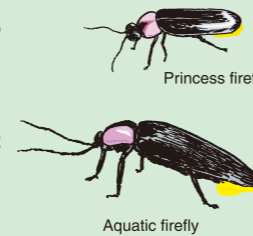
The Daigo cherry tree is estimated to be some 1,000 years old. This magnificent tree measures 18 meters tall, 7.1 meters in girth at eye height, 20 meters in branch extension and 9.2 meters at the roots. It is featured on the new list of Japan's most famous 100 trees.



■ Peak viewing time: Early-mid April
While the flowers are blooming, the trees are lit up at night until 9:00 p.m.

Fireflies

The rivers of the Hokubo area are home to large populations of two kinds of fireflies, both of which can be seen for about a month's time. The best time to view the aquatic variety is late May through mid June, while the princess fireflies are best viewed from Mid June through late July. The Ministry of the Environment has named the fireflies of this area one of the "Best 100 Homes to Living Things."



Cosmos

October is the month for viewing the cosmos flowers in Hokubo. During the time, the flowers can be seen everywhere in the area, from the Cosmos Plaza, which is one hectare of land planted with 10,000 flowers, to the "Cosmos Road," which stretches a total length of some five kilometers.



Maniwa City Map

